

Water-Based Stain SC-35

This chart is for reference only. Viewing any color chart is less accurate than a cured sample. Please apply sample on site before beginning any project.

Applied over TC-4 Fine Texture Cement



Shale | 516



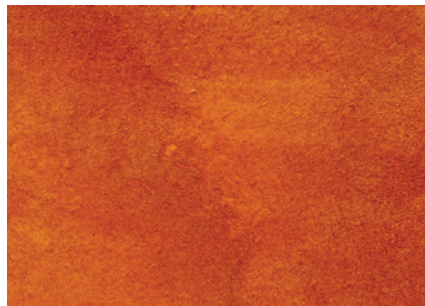
Armor | 514



Onyx | 509



Sienna | 513



Copper | 508



Adobe | 515



Sahara | 518



Umber | 521



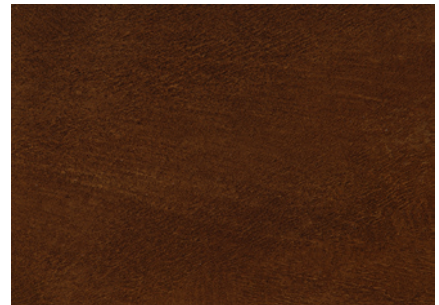
Olive | 520



Camel | 505



Sepia | 511



Mahogany | 501

Not shown but also available in Ivory | 517

These colors are approximate and will vary.
FOR PROFESSIONAL USE ONLY